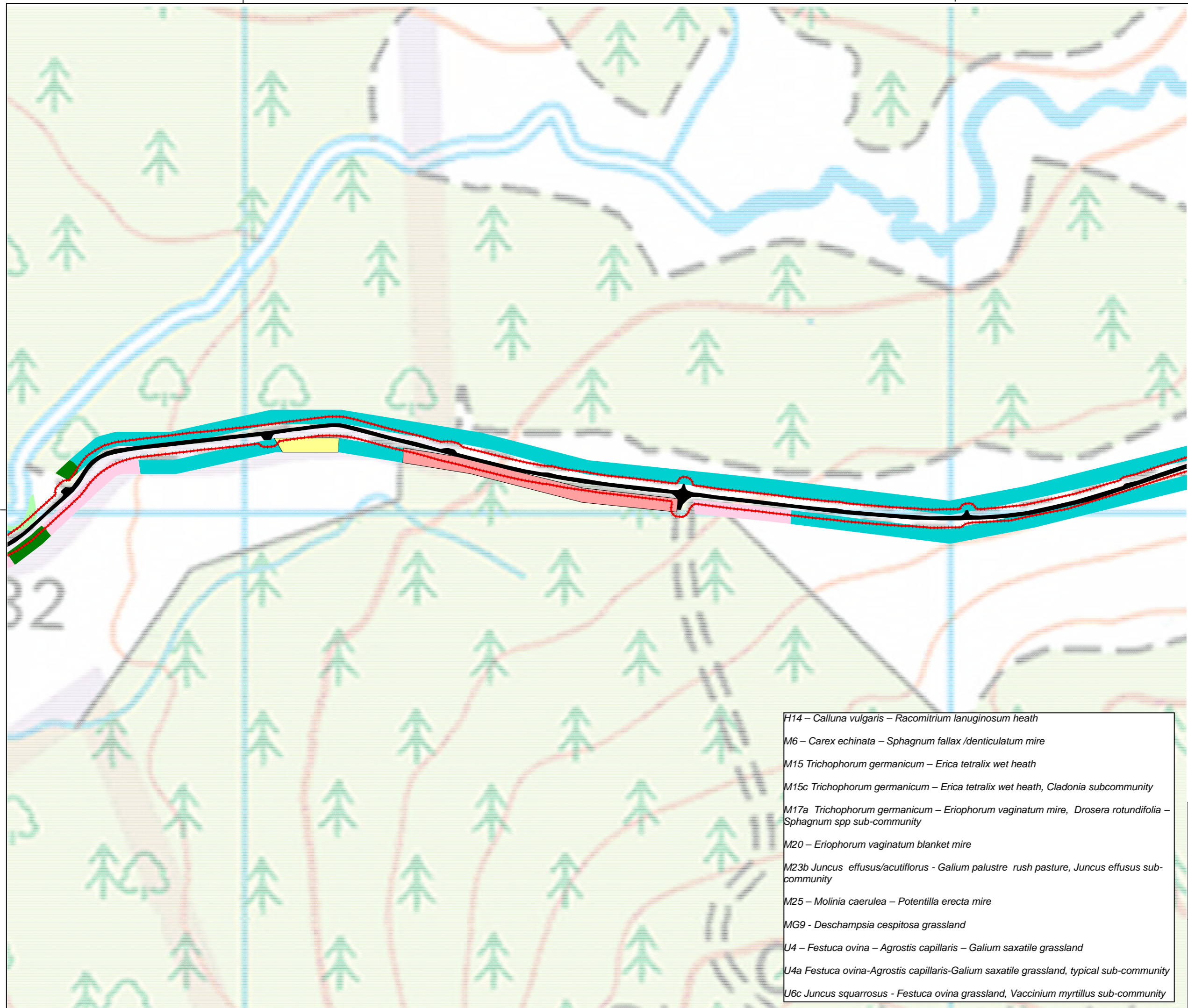


256000

257000



Legend

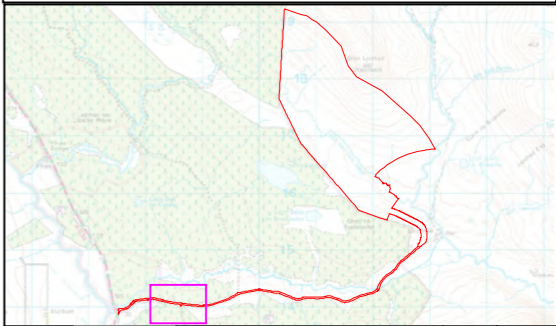
- Site
- Access area

NVC Habitat

M15/H14	M23b
M15/M25	M23b/M25
M15/U4	M25
M15	M25/M15c
M15b/M15c	M25/M23b/MG9
M15b/M17a	M25/MG9
M15b/U4	M25/U4
M15c	M25/U6
M15c/M17a	M25/U6/U4
M15c/U4/U6c	MG9
M17a	U4a
M20	

Co-ordinate System : British National Grid
 Projection: Traverse Mercator
 Datum: OSGB 1936
 Units: Metres

This map contains data from the following sources:
 Ordnance Survey (2021)



Rev	Date	Description	De	App
00	11/02/2022		HD	MJR

- H14 – *Calluna vulgaris* – *Racomitrium lanuginosum* heath
- M6 – *Carex echinata* – *Sphagnum fallax* /*denticulatum* mire
- M15 *Trichophorum germanicum* – *Erica tetralix* wet heath
- M15c *Trichophorum germanicum* – *Erica tetralix* wet heath, *Cladonia* subcommunity
- M17a *Trichophorum germanicum* – *Eriophorum vaginatum* mire, *Drosera rotundifolia* – *Sphagnum* spp sub-community
- M20 – *Eriophorum vaginatum* blanket mire
- M23b *Juncus effusus/acutiflorus* - *Galium palustre* rush pasture, *Juncus effusus* sub-community
- M25 – *Molinia caerulea* – *Potentilla erecta* mire
- MG9 - *Deschampsia cespitosa* grassland
- U4 – *Festuca ovina* – *Agrostis capillaris* – *Galium saxatile* grassland
- U4a *Festuca ovina*-*Agrostis capillaris*-*Galium saxatile* grassland, typical sub-community
- U6c *Juncus squarrosus* - *Festuca ovina* grassland, *Vaccinium myrtillus* sub-community

Chleansaid Wind Farm



TITLE: Figure 8.3e:
 NVC Survey Plan - Access Track

0 200 metres

SCALE: 1:5,000 @ A3

REV 01